



WOODRIDGE STATE HIGH SCHOOL

Uniform Policy

The Uniform Policy identifies clothing that contributes to a safe and supportive learning environment.



Empowered, Resilient... World Changing!

Uniform Policy

Our school is a professional working and learning environment and as such, the dress code reflects high standards of presentation.

The Dress Code identifies clothing and contributes to a safe and supportive learning environment by:

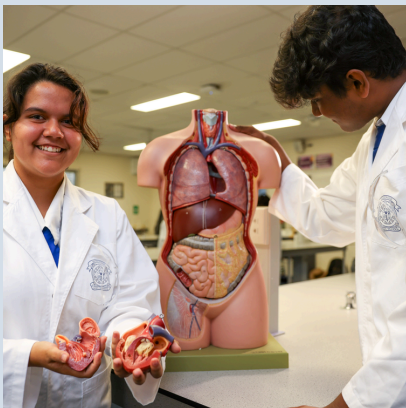
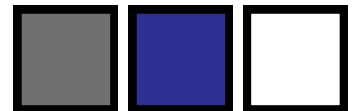
- Ready identification of students and non-students.
- Fostering a sense of belonging.
- Eliminating the distraction of competition in dress and fashion.
- Developing mutual respect by minimising visible evidence of economic or social differences.

Formal school uniform must be worn every day including to and from school and all school excursions, unless otherwise authorised by the Principal as a non-uniform day, or for a school activity not requiring the approved school uniform.

Sports uniform must be worn during HPE practical lessons or can be worn during lunch time for physical activities. Students are expected to change into their sports uniform for HPE/Sport classes or for lunch time physical activities, this includes changing back into their formal uniform at the end of the HPE/Sport class or lunch time physical activity. This is to support Hygiene and Health, Safety and Wellbeing.

Students are required to wear either their full formal school uniform or full sports uniform – **no mix and match**.

The colours of the school uniform are royal blue, white and grey.



Formal Uniform

Junior

Senior

Junior
Striped Blouse -
Long Sleeve and
Tie (Optional)



Junior
Striped Blouse -
Short Sleeve and
Tie (Optional)



Senior White
Blouse - Long
Sleeve and Tie



Senior White
Blouse - Short
Sleeve and Tie



Junior
Striped Shirt -
Long Sleeve and
Tie (Optional)



Junior
Striped Shirt -
Short Sleeve and
Tie (Optional)



Senior White
Shirt - Long
Sleeve and Tie



Senior White
Shirt - Short
Sleeve and Tie

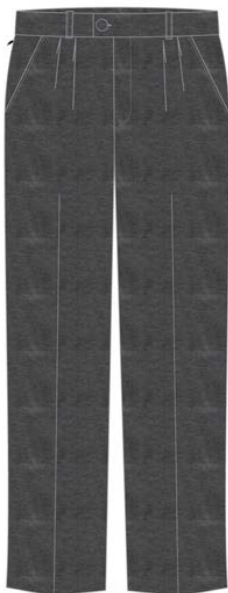


*Variations: As we transition through the uniform change in ties, some students may still be wearing the 2023 short tie.



Compulsory
School Hat

Formal Uniform -
Pants Unisex



Formal Uniform -
below knee length
Skirt



Formal Uniform -
Culotte



Formal Uniform -
Short Unisex



Sports Uniform

Sports uniform **must** be worn during HPE practical lessons or **can** worn during lunch time physical activities. Students are *expected to change into their sports uniform for HPE/Sport classes*, this includes changing back into their formal uniform at the end of the HPE/Sport class or lunch time physical activity. This is to support Hygiene and Health, Safety and Wellbeing.

Junior

Junior Sport Uniform
Casual Polo Shirt -
Long Sleeve



Junior Sport Uniform
Casual Polo Shirt -
Short Sleeve



Senior

Senior Sport Uniform
Casual Polo Shirt -
Long Sleeve



Senior Sport Uniform
Casual Polo Shirt -
Short Sleeve



Sport Uniform
Short



Compulsory
School Hat



Royal Blue
School
Pants



Uniform - Additional items

Stockings

Stockings should be plain black or neutral (skin-toned) without any patterns. Students are **not to wear socks** when **wearing stockings**. Alternatively, **black leggings can be worn, however must only be worn with black socks, ensuring no skin is visible.**



Jackets, Jumpers and Scarf

Students are to wear the Royal Blue School Jacket or Knitted Jumper or Scarf (Available from the uniform shop only). Students are to wear correct uniform underneath jackets and jumpers. The School Navy Blazer is to be worn over formal uniform.



High Performance Sport (HPS) Uniform

HPS uniform is only to be worn during HPS classes and official training/games. *Students are expected to change into their HPS uniform for HPS class and training/games, this includes changing back into their formal uniform at the end of the HPS class and training/games. This is to support Hygiene and Health, Safety and Wellbeing.*

HPS Shorts - Rugby League, Volleyball & Soccer



HPS Shirt - Rugby League, Volleyball & Soccer



Shorts - Rugby League (Game only)



HPS Socks - Rugby League & Soccer (Game only)



Compulsory School Hat

Year 12 Senior Jersey/Jackets

Students may wear a senior jersey or jacket that are of the current cohort of students. **Students are not permitted to wear one of these items from a previous year.** Students may wear these items over the top of formal or sports uniform.



Uniform - Accessories

Jewellery

Workplace Health & Safety regulations require that jewellery and body piercings be kept to an absolute minimum and must not pose a safety risk.

- Only one necklace can be worn, and must be concealed under the shirt. Must not pose a safety risk by virtue of its size, shape or sharpness.
- No bracelets or wristbands are permitted.
- Spacers, tapers, helix, hoops and other earlobe stretching instruments are not allowed at any time.
- No other facial or body piercings are allowed.

Permitted Jewellery includes:

- Watch.
- Ring: One plain or signet ring without raised edges.
- Earrings: One pair of small 10mm plain sleepers OR regular 4mm ball studs in gold or silver – i.e. 'no bling'.



Hair & Make-Up

Hair should be kept clean, neat and tidy to ensure health issues do not occur. **Hair colouring should look natural**, relative to the individual with no bright colours (e.g. pink, blue, green etc).

Hair styling should be modest and acceptable to a professional workplace and comply with workplace health and safety provisions, e.g. Hair shoulder length or longer must be tied back.

The following hair styles are considered unacceptable:

- Hair styles with heavy visual 'thickenings' such as soap or glue.
- Radical, attention seeking hair styles (e.g. green mohawks), which are deemed unacceptable for a workplace are not permitted.

The only **acceptable nail covering is clear or natural nail polish**. Obvious facial make up is not permitted i.e. heavy eyeliner or eye shadow and fake eye lashes or extensions.

Uniform - Bags

Students are expected to bring with them their learning materials for every lesson, every day. This should include a BYOD (Bring Your Own Device). These items must be transported in a

- Suitably sized backpack or bag.
- No bum bags or handbag sized bag items are permitted.



Uniform - Headwear

Sun Safe Headwear



The Education Department is committed to protecting students from the harmful effects of the sun in accordance with the Departments' procedure and policy. As part of our overall Sun Smart Policy, helping our students develop good sun safe habits and protect themselves, **students will be expected to wear the Sun Smart School Bucket Hat.**

<https://woodridgeshs.eq.edu.au/calendar-and-news/news/sun-safety>

Our school Sun Safe Hat should be worn when outdoors. (Available from the uniform shop, or free with first payment of Student Resource Scheme). Visors and caps are not considered appropriate sun safe items.

Cultural Headwear

Any specific cultural headwear, such as a hijab or pagri is to be **White or Royal Blue in colour** only. Cultural headwear must be plain in colour with no decorative patterns or adornments.



Uniform - Shoes and Socks



Students are to wear all black leather dress shoes or sneakers. Shoes must have black shoelaces. Shoes must be all black without any second colour as edging or decorative striping. Footwear must be properly secured at all times. **Socks must be plain white in colour** and above the ankle in length. *Variation: Black socks are only permitted when worn with black leggings, ensuring no skin is visible.

Workplace Health & Safety regulations nominate that footwear must have solid, impervious uppers (no mesh or fabric or canvas material). Students engaged in senior workshop activities will be required to wear substantial footwear protection (e.g., safety boots).

Students may be withdrawn from class and the playground for footwear that breaches workplace health and safety guidelines.

Uniform Corrections

All students are expected to be in full school uniform, every day, with no exceptions. When any item of the correct school uniform cannot be worn, the student must present to the Uniform Support Room prior to the first bell and bring a valid note of explanation from parents/carers.

Alternate uniform arrangements will be made for the student using school purchased uniform items (where possible). Borrowed uniform items must be returned in a timely manner, or families may be invoiced for the unreturned uniform.

Uniform Correction Process

- Student presents to Student Services Office in K Block to rectify uniform at the beginning of the school day
- If the item IS in stock, the student borrows the item and returns to class. The parent/carer will be contacted to inform of stock borrowed. Parents/ Carers will be invoiced if item not returned.
- If the item is NOT in stock the parent/carer will be contacted to drop off the needed uniform item. The student remains in Student Services Office in K Block, completing learning through QLearn until the uniform is rectified.
- Students will not be able to attend class until uniform is corrected and is in line with Health Safety and Wellbeing policies.

Please NOTE:

- The student DOES bring a note from parent/carer at the beginning of the school day = no detention, uniform rectified
- The student DOES NOT bring a note from parent/carer = Lunch 2 detention, uniform rectified

Non-Uniform Days

Clothing for these days must be neat and tidy. On these occasions students are not permitted to wear the following:

- Shirts which do not provide sun protection for the shoulders.
- Open footwear such as sandals/thongs and shoes with non- impervious uppers.
- Any item of clothing with inappropriate language or art work. Any item of clothing which is considered to be immodest i.e. bare mid-riffs and low cut clothing.
- Any items of jewellery which breach school rules or Workplace Health & Safety requirements.

Uniform - Unacceptable Items

No attire other than the standard uniform is acceptable. **No T-shirts or undergarments** that are visible are to be worn under the shirt or blouse. Any item of clothing, that is not in the stated policy, as well as **hoodies, beanies, denim jeans, black coloured slacks, non-uniform tracksuit pants, rolled up slacks and bandanas** are not acceptable.

Cultural and Medical Adjustments

Woodridge State High School values and respects the diverse cultural, religious, and medical needs of our students. Where adjustments to the standard uniform or physical requirements are necessary due to cultural observance or medical conditions, students are expected to:

- Inform their Student Performance, Empowerment, and Culture Head of Department (SPEC HOD) of any medical adjustments required and/or adjustment to uniform prior to a cultural event.
- Seek approval to ensure the adjustment is recognised, communicated, and supported appropriately.

Uniform Shop

The Uniform Shop carries the full range of uniforms necessary for your child to attend Woodridge State High School. All compulsory uniform clothing items are stocked. The required black school shoes and sporting footwear are not available from the Uniform Shop; these must be purchased separately.

UMS is proud to be the authorised supplier for Woodridge State High School Uniforms.

Woodridge State High uniforms are available to purchase online or at the onsite school uniform shop. Online orders can be collected from the uniform shop.

To order uniforms please go to Woodridge State High Website:

<https://woodridgeshs.eq.edu.au/facilities/uniform-shop> or for assistance on how to order your uniforms, see contact details below we would be more than happy to assist you.

Empowered, Resilient...World Changing!

Normal operating hours

Monday - 8:00am to 11:30am

Tuesday - 12:00pm to 3:00pm

Wednesday - 8:00am to 11:30am

Please note: The uniform shop is closed on school holidays, student free days and public holidays.

Contact Details:

Phone: (07) 3535 9500 or 0415 633 055

Email: WSHS@umspl.com.au

